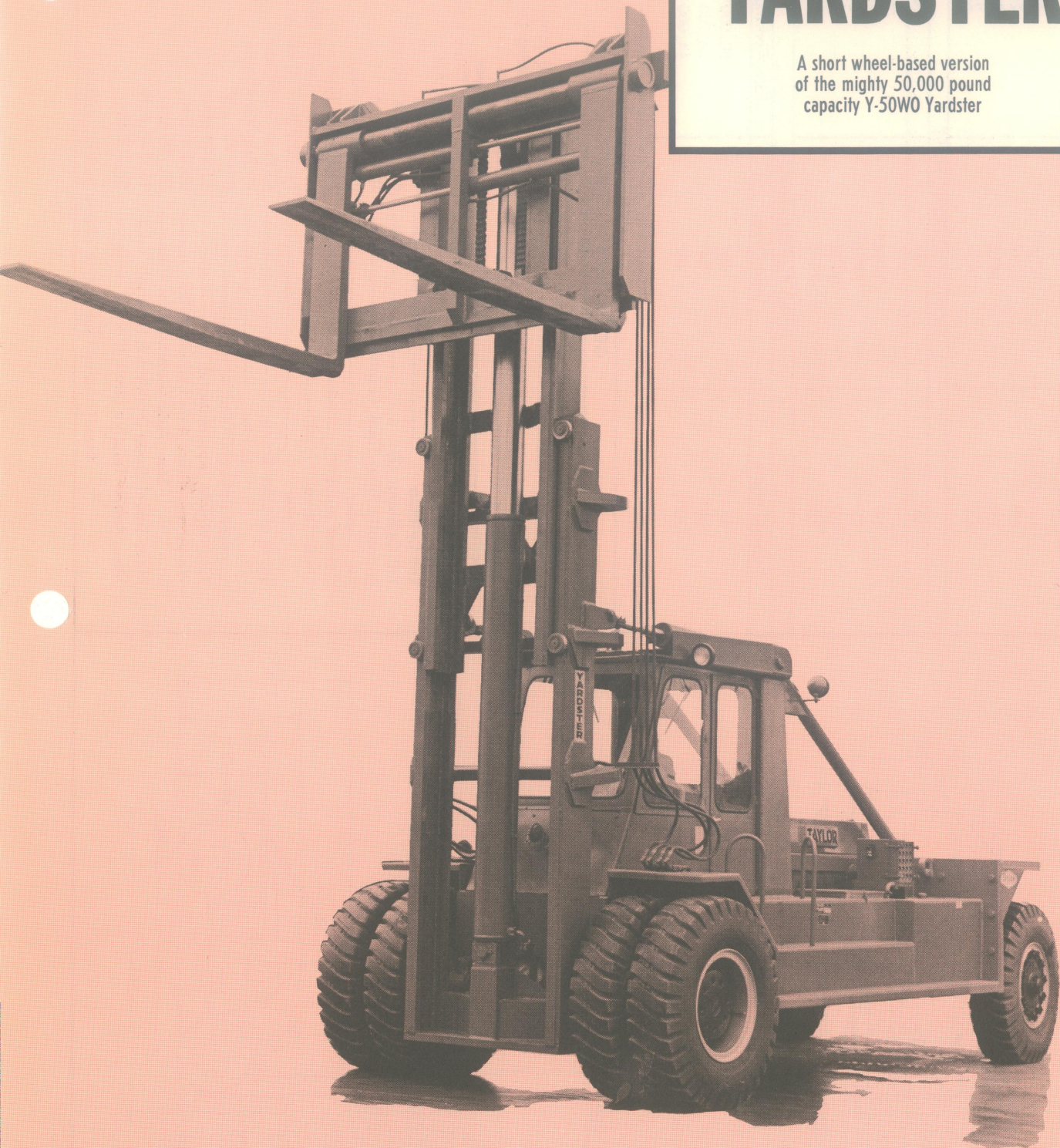


Y-50WOM YARDSTER

A short wheel-based version
of the mighty 50,000 pound
capacity Y-50WO Yardster



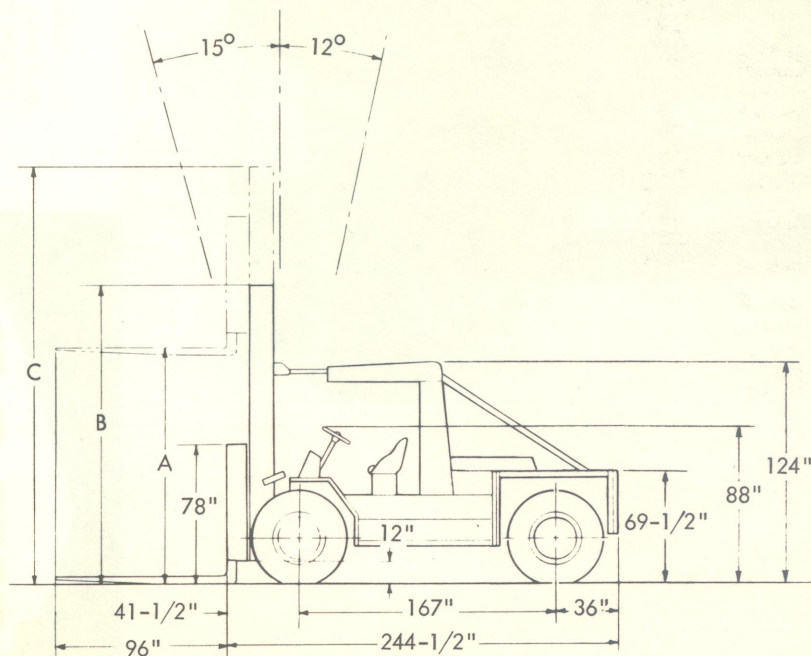
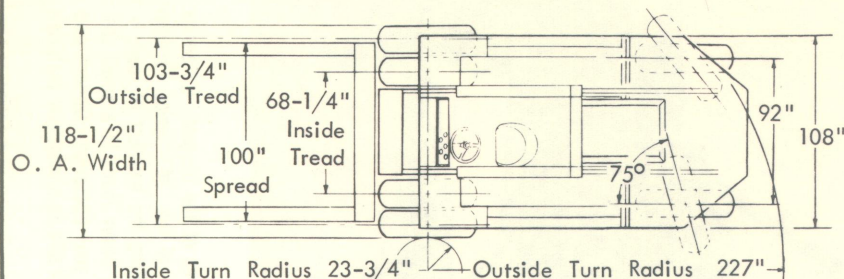
The Y-50WOM combines all the features of the biggest "O" Series Yardsters with the space-saving shorter wheelbase of all of the "M" Series Yardsters. This makes the Y-50WOM the ideal machine for handling the heaviest of loads with ease and speed in the tightest of quarters. If moving heavy loads in a small space is your problem, the Y-50WOM may be the answer for your operation. Options and attachments which are available make the Y-50WOM adaptable to almost any materials handling job.

TAYLOR MACHINE WORKS / LOUISVILLE, MISSISSIPPI



YARDSTER

MODEL Y-50 WOM 50,000 Lbs. @ 48" L. C.



UPRIGHT DIMENSION TABLE

TELESCOPIC MAST

Standard Fork Elevations	Overall Height Forks Down	Overall Height Forks Raised
"A"	"B"	"C"
11' (Std.)	12' 6"	18'
13'	13' 6"	20'
15'	14' 6"	22'
18'	16'	25'

NON-TELESCOPIC MAST

"A"	"B"	"C"
11'	17' 6"	18'
13'	19' 6"	20'
15'	21' 6"	22'
18'	24' 6"	25'

LOAD PERFORMANCE

Package Width	Load Center	Safe Working Capacity
96"	48"	50,000 Lbs.
108"	54"	46,750 Lbs.
120"	60"	44,000 Lbs.

Load Moment 4,475,000 In. Lbs.

GENERAL SPECIFICATIONS

Engine	GM 4-71-N-65
Transmission	Allison CRT 3531 Torqmatic 3-Speed w/ Inching Control Valve
Drive Axle	Planetary Type
Steering	Hydraulic Power
Parking Brake	13-3/8" x 2" Drive Line Type
Wheel Brakes	20-1/4" x 7" Air
Lift Cylinder	9" Ram Size
Tilt Cylinders (2)	6-1/2" x 44" Stroke
Hydraulic Filter (Tank Location)	100 G. P. M.
Air Cleaner	Farr Roto Pamic
Control Valve	Feathering Type
Tires: Drive	14.00 x 24 - 20 PR HRL
Steer	14.00 x 24 - 20 PR HRL
Speed of Lift: Empty	43 Feet Per Minute
Loaded	40 Feet Per Minute
Standard Forks ("C" Carriage)	8' x 10" x 5"
Total Weight (Approximate)	72,200 Lbs.
Weight on: Drive Axle (Approximate)	35,000 Lbs.
Steer Axle (Approximate)	37,200 Lbs.
Max. Travel Speed (Forward & Reverse)	16.0 M.P.H.
Max. Avail. Tractive Effort @ Stall	53,200 Lbs.

Specifications subject to change without notice.

Spec. No. 68-1