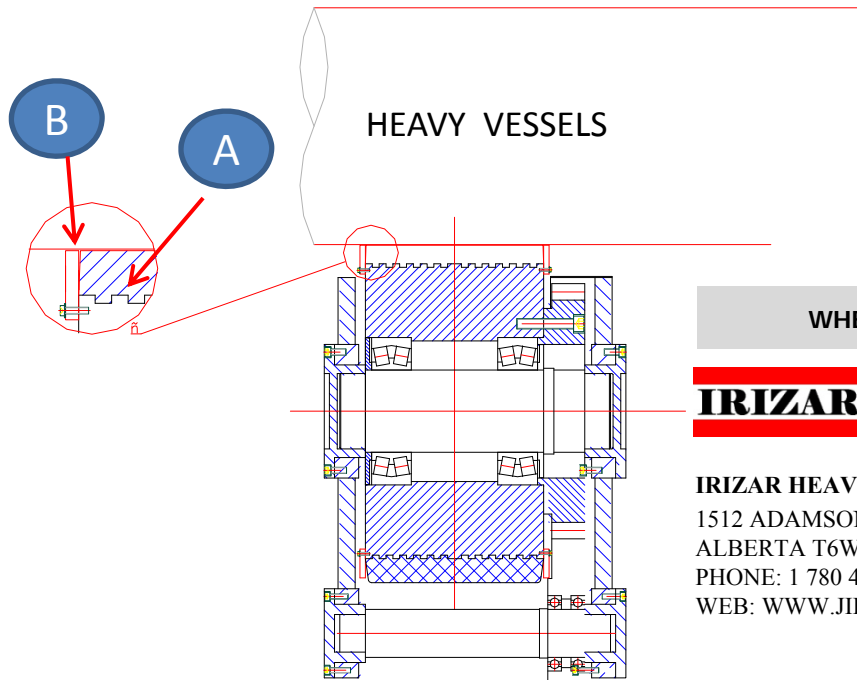
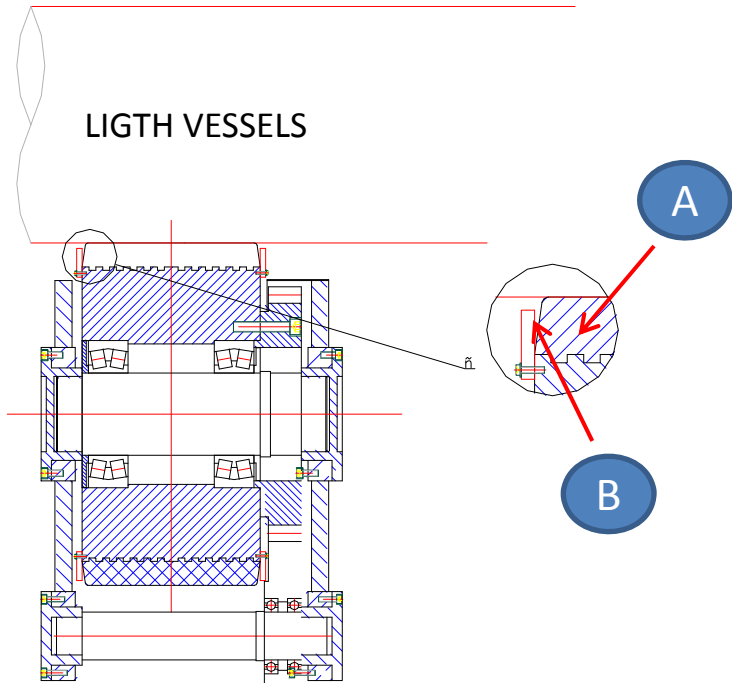
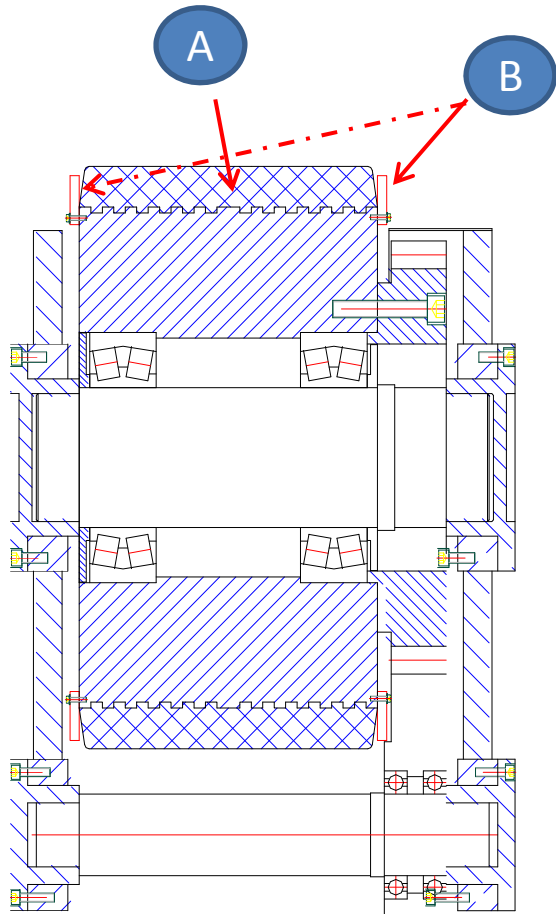


ROTATOR'S STANDARD WHEELS

Standard wheel's rotators are composed of two parts. Heavy Duty Rubber in the middle section "**PART A**", and two low carbon steel rings on each side "**PART B**". Light vessel/pipe sits **ONLY** on rubber part. Heavy vessel/pipe sits on the full wheel since the rubber squeezed. The middle section (rubber part) is designed only to increase friction to avoid vessel/pipe to spin while is rotating.

ROTATOR'S CUSTOM WHEELS

Wheels are fully covered with Polyurethane.
Application: Mainly for construction of stainless steel vessels.



WHEELS

IRIZAR

IRIZAR HEAVY INDUSTRIES INC
1512 ADAMSON VIEW, EDMONTON
ALBERTA T6W 0V4, CANADA
PHONE: 1 780 450 6695
WEB: WWW.IRIZAR.COM

SAR 100 WITH STANDARD WHEELS



SAR 150 WITH POLYURETHANE WHEELS



WHEELS

IRIZAR

IRIZAR HEAVY INDUSTRIES INC
1512 ADAMSON VIEW, EDMONTON
ALBERTA T6W 0V4, CANADA
PHONE: 1 780 450 6695
WEB: WWW.IRIZAR.COM